



CHAUVET **3**

*Perfect Lighting*

For the best day of their lives



# Beaming

Dramatic moving lights available in elegant bridal white



## INTIMIDATOR SPOT 360

Intimidator Spot 360 is a 100 W LED packed with mobile event lighting power. Dual rotating prisms are on board to split the beam and cover a larger area with Intimidator Spot 360's impressive visuals. Throw light even farther by decreasing the beam angle 5° using the manual zoom. Motorized focus gives you the ability to create sharp gobo patterns from almost any distance and Totem mode lets you keep the beams forward.

- DMX Channels: 8 or 14
- Light Source: 1 LED (white) 100 W (3.2 A), 50,000 hours
- Illuminance (12°): 35,010 lux @ 2 m
- Colors: 8 + white, split colors, continuous scroll at variable speeds
- Gobos: 7 + open (6 metal + 1 glass), rotating, interchangeable, indexing, slot-n-lock, continuous scroll at variable speeds
- Prism (1): 3-facet round, bidirectional rotation at variable speeds
- Prism (2): 5-facet linear, bidirectional rotation at variable speeds



## INTIMIDATOR SPOT 375Z

Intimidator Spot 375Z IRC is an exceptionally bright, 150 W LED moving head spot designed for large events. It features motorized zoom for short-throw or long-throw applications and dual rotating prisms split the beam for great effects, covering a larger area. The motorized focus ensures crisp projections at almost any distance and the built-in Totem mode keeps the beams exactly where you want them.

- DMX Channels: 9 or 15
- Light Source: 1 LED (white) 150 W (12.3 A), 50,000 hours
- Illuminance (10°): 38,000 lux @ 2 m
- Colors: 7 + white, split colors, continuous scroll at variable speeds
- Gobos: 7 + open (6 aluminum + 1 glass), rotating, interchangeable, indexing, slot-n-lock, continuous scroll at variable speeds
- Prism (1): 6-facet round, bidirectional rotation at variable speeds
- Prism (2): 5-facet linear, bidirectional rotation at variable speeds







# Accent Lighting

Accent lighting highlights key components of a wedding and enhances your décor. Put beautiful wedding cakes in the spotlight, accentuate table centerpieces, add prominence to the sweetheart table -- all with a pinspot. Spotlight the details or place fixtures underneath tables for soft glows in matching wedding colors.

## EVE E-50Z

EVE E-50Z is an LED ellipsoidal that shines a hard-edged, warm white spot and features D-Fi USB compatibility for wireless master/slave or DMX control. Manual zoom gives you the flexibility to project from any distance and its framing shutters let you easily alter and control the projected beam. EVE E-50Z includes holders for glass and steel gobos as well as a gel frame. You can operate EVE E-50Z in standalone mode eliminating the need for DMX control.

- DMX Channels: 1 or 3
- Light Source: 1 LED (warm white)  
50 W, (1.3 A), 50,000 hours
- Color Temperature: 3500 K
- Illuminance (20°): 7,910 lux @ 2 m
- Zoom Angle (manual): 20° to 39°
- D-Fi USB compatible



## EVE E-100Z

EVE E-100Z is a powerful spot fixture featuring sharp pattern projection with a 100 W warm white LED light source and D-Fi USB compatibility for wireless master/slave or DMX control. This versatile fixture works with metal or glass gobos to create incredible projections, monograms, or patterns. The manual zoom and framing shutters make it simple to control beams.

- DMX Channels: 1 or 3
- Light Source: 1 LED (warm white)  
100 W (2.3 A), 50,000 hours
- Color Temperature: 3500 K
- Illuminance (14°): 15,100 lux @ 2 m
- Zoom Angle (manual): 14° to 30°
- D-Fi USB compatible



## EZPIN PACK 4

Accent lighting and pinspotting with battery-powered EZPin Pack 4 makes lighting centerpieces, cakes, and other event space focal-points easier than ever. EZPin Pack 4 bundles four EZPin fixtures and one IRC-6 remote into an easily transportable VIP gear bag; perfect for mobile entertainers and event producers. Each light has a magnetic base that affixes to most metal surfaces, eliminating the need for clamps. No metal surfaces? No problem! Easily attach the lights to drop ceiling supports or air wall frames using CHAUVET DJ Scissor Clip. EZPin Pack 4 includes variable white gels to achieve versatile lighting looks. You can even control the units remotely with the included IRC-6 remote.

- Light Source: 1 LED (cool white)  
2 W, (725 mA), 50,000 hours
- Illuminance: 3,112 lux @ 2 m
- Color Temperature: 7100 K
- Included gels: 2700 K and 4000 K





# Accent Lighting

Accent lighting highlights key components of a wedding and enhances your décor. Put beautiful wedding cakes in the spotlight, accentuate table centerpieces, add prominence to the sweetheart table -- all with a pinspot. Spotlight the details or place fixtures underneath tables for soft glows in matching wedding colors.

## EVE TF-20

EVE TF-20 is a compact, energy efficient, soft edge LED accent luminaire that can function as a regular PAR can, while its classic Fresnel style emulates stage and theatrical lighting. Conveniently included barn doors block light from unwanted areas, letting you focus on a particular space or object. Thanks to its CCR (Constant Current Reduction) LED dimming, it works seamlessly with conventional dimmers, and is flicker-free in filmed productions.

- Light Source: 1 COB LED (warm white)  
20 W, (0.5 A), 50,000 hours
- Beam Angle: 24°
- Illuminance: 1,506 lux @ 2 m
- Color Temperature: 2700 K
- Compatible Track: Type H



## EVE F-50Z

EVE F-50Z is an LED Fresnel fixture that shines a soft-edged, warm white spot and features D-Fi USB compatibility for wireless master/slave or DMX control. Manual zoom gives you the flexibility to project from any distance. You can operate EVE F-50Z in standalone mode eliminating the need for DMX control and you can save time running extension cords by power linking multiple units.

- DMX Channels: 1 or 3
- Light Source: 1 LED (warm white)  
50 W, (1.3 A), 50,000 hours
- Illuminance (17°): 4,780 lux @ 2 m
- Color Temperature: 3500 K
- Zoom Angle (manual): 17° to 50°
- D-Fi USB compatible







# Wash Lights

Transform the look and feel of any room into something exceptional with uplighting. Easily set the mood of the entire day by adding elegant bridal white or dramatic columns of light. Integrating uplighting and ambient lighting allows you to create a cohesive look by marrying your venue with the wedding colors.

## FREEDOM PAR QUAD-4 IP

Freedom Par Quad-4 IP is a 100% TRUE wireless, battery-operated, quad-color (RGBA) LED Par with built-in D-Fi transceiver. Its temporary outdoor-rated robust housing repels water, snow, dirt, and sand for all-weather applications and is available in black or white. Freedom Par Quad-4 IP works in Master/Slave mode with first-generation Freedom Pars and it has multiple wireless triggering and control options via the FlareCON Air and the FlareCON app.

- DMX Channels: 4, 6, or 10
- Light Source: 4 LEDs (quad-color RGBA)  
5 W, (2 A), 50,000 hours
- Beam Angle: 15°
- Illuminance: 2,464 lux @ 2 m
- Maximum Run Time (all on): up to 8 hours
- Maximum Run Time (single color): 20 hours



## FREEDOM PAR HEX-4

The Freedom Par Hex-4 is the most colorful model in the next generation of the Freedom Par family. It has four 10-watt RGBAW+UV LEDs for that extra punch and the special effects that white and UV add to color mixing. The Freedom Par Hex-4 has a special limiter option for extending battery life so that when you use more than 4 colors you know you'll get a good long show! The Freedom Par Hex-4 comes in black or white housing so it fits into any décor and travels safely while charging using the Freedom Charge 9 road case.

- DMX Channels: 6, 8, or 12
- Light Source: 4 LEDs (hex-color RGBAW+UV)  
10 W (2 A), 50,000 hours
- Beam Angle: 23°
- Illuminance: 1,372 lux @ 2 m
- Maximum Run Time (all on): up to 8 hours (with limiter on)
- Maximum Run Time (single color): up to 20 hours



## FREEDOM H1

Freedom H1 is a compact 100% TRUE wireless, battery-operated, LED wash light with a built-in D-Fi transceiver. The fixture features a single hex-color (RGBAW+UV) 10 W LED. Its magnetic base makes it easy to mount the light to most metal surfaces providing added versatility. Because of its small size, Freedom H1 features effortless transport and set-up. Freedom H1 has a digital display for easy control and adjustment of all settings. Multiple control options include stand-alone mode, wireless DMX, or IR. The Freedom H1 X4 system includes: 4 fixtures, 4 diffusers, a carry bag, multi-charger, and IRC-6 remote.

- DMX Channels: 6, 8 or 12
- Light Source: 1 LED (hex-color RGBAW+UV)  
10W, (3 A), 50,000 hours
- Beam Angle: 21°
- Illuminance: (w/ filter): 268 lux @ 2 m  
(w/o filter): 314 lux @ 2 m
- Maximum Run Time (all on): up to 8 hours





# Atmosphere

Create unforgettable moments



## NIMBUS

Nimbus is a professional dry ice machine which produces thick, white fog that hugs the floor and dissipates without rising. This powerful machine heats enough water to create fog from 10 lb of dry ice to provide 6 minutes of run time. Output and flow are easily controlled, thanks to an adjustable multi-level control arm. Dual heaters allow for faster heat-up and recycle times, and the low-water sensor increases safe use of the machine.

- Tank Capacity: 4.5 gal (17 l)
- Heat-up Time (single element): 50 min
- Heat-up Time (dual element): 30 min
- Average runtime: 6 min
- Reheat time (single element): 30 min
- Reheat time (dual element): 15 min
- Dry ice capacity: 10 lb (4.5 kg)



## BUBBLE MACHINE

The CHAUVET DJ B-250 is CHAUVET DJ's mid-level bubble machine, designed for larger areas, where portability remains a top need. It features an all plastic construction to prevent rust and lower weight, with an easily removable fluid tank. This unit is a mobile DJ's workhorse.

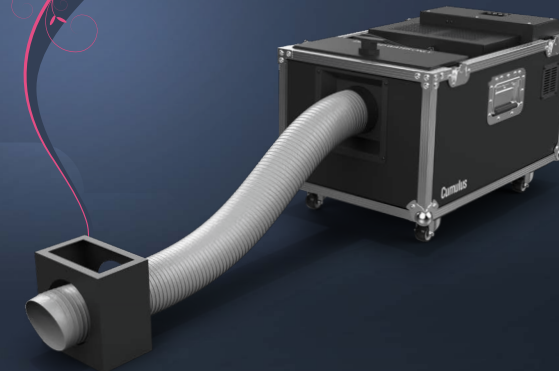
- Tank Capacity: 24 oz (0.7 l)
- Fluid Consumption: 108 ml/hr



## CUMULUS

Cumulus is an event-ready, low-lying fog machine that creates thick clouds that hug the floor without the need for dry ice. The onboard ultrasonic agitator converts distilled water into a thin mist. The unit's fast heat up time allows for quick operation and fog on demand. It's rugged flight case makes transportation a breeze and locking casters prevent accidental rollaways. Cumulus can be controlled with the on board digital display or DMX.

- DMX Channels: 2
- Fog Fluid Tank Capacity: .9 gal (3.25 l)
- Water Tank Capacity: 2 gal (7.6 l)
- Heat-up Time: 3 min
- Output: 10,000 cfm
- Compatible Fluids: HFG, FJU, HDF, QDF





# Ultimate Personalization

For ultimate personalization, add monogrammed lighting. Project your personalized image onto the dance floor, behind the sweetheart table, or any other desire location to add that special touch.



## GOBO ZOOM USB

Gobo Zoom USB is a super compact gobo projector with a manual zoom and rotating gobos, along with wireless connectivity in master/slave and DMX mode, thanks to its embedded D-Fi USB compatibility. Gobo Zoom USB accepts custom gobos, including patterns and messages easily printed on transparency film.

- DMX Channels: 2
- Light Source: 1 LED (cool white) 25 W (6 A), 50,000 hours
- Illuminance: (17°) 3,075 lux @ 2 m
- Zoom Angle (manual): 17° to 28°
- Battery operated

10 Wedding-Ready Gobos Included



## EZGOBO

EZGobo is a battery-powered LED gobo projector, that can project a custom image anywhere. Its magnetic base affixes to most metal surfaces, eliminating the need for clamps, and the scissor clip with eye loop easily attaches to drop ceiling supports, for quick setup and cable management. You can easily print your own custom gobos on transparency film.

- Light Source: 1 LED (cool white) 10 W (1.4 A), 50,000 hours
- Illuminance: (16°) 669 lux @ 2 m
- Zoom Angle (manual): 16° to 31°
- Maximum Run Time: up to 5 hours
- Battery operated

10 Wedding-Ready Gobos Included





*A touch of  
Elegance*

## FREEDOM STICK PACK

Freedom Stick is a unique and versatile free-standing RGB LED that can be pixel-mapped for ultimate programming creativity. This battery powered fixture has a built-in D-Fi receiver that allows it to be placed anywhere. The sticks also work excellently as truss warmers. A detachable metal base allows you to mount them on truss (clamps sold separately). User-customizable automated programs create complex looks in seconds. Additional control options include auto and sound programs via DMX, wireless master/slave or the IRC-6 remote.

- DMX Channels: 3, 8, 48, or 50
- Light Source: 32 SMD LEDs (tri-color RGB)  
0.2 W (50mA), 50,000 hours
- Maximum Run Time (all on): up to 8 hours
- Battery operated



## TRUSST CT-SC DUO

Trusst Tripod Duo Scrim allows you to create interesting fabric columns using your existing tripod stands. Covering the tripod allows it to blend into the background providing a cleaner look while hiding unsightly cables. Additionally, uplighting a tripod with a scrim creates a unique colored decor element for any occasion creating additional drama and excitement for your guests. The Tripod Duo Scrim masks two sides of a tripod stand, the third side remains open to allow easy access to the tripod adjustment knobs and cable routing.

- Weight: 0.6 lb (0.3 kg)
- Height: 4 to 7 ft (1.2 to 2.1 m)
- Leg width: 3.5 to 4.5 ft (1 to 1.4 m)







**Global Headquarters**  
5200 NW 108th Avenue  
Sunrise, FL 33351 USA

**California Branch**  
7555 N. San Fernando Road  
Burbank, CA 91505 USA

**Chauvet México**  
Av. de las Partidas 34 – 3B  
Zona Industrial Lerma  
Lerma, Estado de México, CP 52000

**Chauvet Belgium**  
Stokstraat 18, 9770 Kruishoutem, Belgium

**Chauvet UK**  
Brookhill Road Industrial Estate  
Pinxton, Nottingham NG16 6NT, United Kingdom

**Chauvet Germany**  
Bruno-Bürgerl-Str. 11  
28759 Bremen, Germany

**Chauvet France**  
3, Rue Ampère  
91380 Chilly-Mazarin, France

For complete specifications, visit [CHAUVETDJ.com](http://CHAUVETDJ.com) or [TRUSST.com](http://TRUSST.com) | All products meet CSA and CE standards. Specifications subject to change without notice.









